



## Botanic Gardens and Parks Authority Excursion Management Plan Kings Park

### Organisation Details

Name of Organisation:	Botanic Gardens and Parks Authority (BGPA)
Contact Person:	Education Bookings & Support Officer
Location:	Kings Park and Botanic Garden
Physical Address:	4 Kattidj Close, Kings Park WA 6005
Postal Address:	1 Kattidj Close, Kings Park WA 6005
Phone Number:	(08) 9480 3638
Email Address:	<a href="mailto:education@bgpa.wa.gov.au">education@bgpa.wa.gov.au</a>
Website Address:	<a href="http://www.bgpa.wa.gov.au">www.bgpa.wa.gov.au</a>

### Contents

1.	Local Excursion .....	2
2.	Completing The Proposal For Excursion .....	4
3.	Educational Purpose.....	2
4.	Risk Assessment .....	2
5.	Students' Capacity and Health Care .....	6
6.	Supervisory Team .....	6
7.	Supervision Strategies .....	6
8.	Identification of Excursion Participants .....	5
9.	Communication Strategies .....	6
10.	Briefing Students and Supervisors.....	6
11.	Transport Arrangements.....	7
12.	Locations and Venues .....	8
13.	External Providers .....	22
14.	Insurance Cover for External Providers .....	23
15.	Emergency Response Planning .....	21
16.	Detailed Costing of Excursion .....	22
17.	Information to Parent/Carer/Guardian for their Consent.....	223
18.	Record Keeping .....	22



### 1. Local Excursion

The teacher in charge of booking the excursion is responsible for ensuring approval for the excursion has been provided by the school's Principal.

### 2. Completing the Proposal for Excursion

This document provides information to assist the teacher-in-charge to complete the Proposal for Excursion, in accordance with the [Department of Education's Excursions in Public Schools Policy \(2020\)](#), [Excursions in Public Schools Procedures \(2020\)](#) and [Local Area Excursions \(2020\)](#).

### 3. Educational Purpose

Kings Park and Botanic Garden is a unique outdoor educational resource that is centrally located, making it easily accessible to all schools in the Perth metropolitan region.

Over 400 hectares in size, Kings Park overlooks the city of Perth and the Swan River. Nearly two thirds of Kings Park is remnant bushland which supports hundreds of native plant and animal species. The remainder of the Park is made up of well-maintained parklands, the State War Memorial Precinct, the Western Australian Botanic Garden, Rio Tinto Naturescape Kings Park and children's play areas.

Kings Park Education and Learning programs engage students in hands-on, inquiry-based learning linked to the Western Australian Curriculum Learning Areas, Cross Curriculum Priorities and general Capabilities. A wide variety of educational programs, facilitated by experienced teaching staff, immerse students in the natural environment as they explore the inter-connected world of plants, animals and people. Teacher resources and opportunities for self-guided learning complement the programs.

### 4. Risk Assessment

There are natural hazards in all areas of Kings Park and Botanic Garden and close supervision of children is required at all times.

The BPGA recommends the excursion leader undertakes a pre-excursion site visit prior to their excursion to Kings Park and Botanic Garden to undertake a risk assessment and familiarise them with the venue.



## Inductions to Rio Tinto Naturescape Kings Park

It is recommended that teachers planning an excursion to [Rio Tinto Naturescape Kings Park](#) for the first time visit the venue and complete a self-guided pre-excursion checklist [Botanic Gardens and Parks Authority - Excursion essentials \(bgpa.wa.gov.au\)](#)

## Water bodies

There are ornamental water bodies in the Western Australian Botanic Garden and May Drive Parkland. Further water bodies for both conservation and nature-play purposes are located in Rio Tinto Naturescape Kings Park. Details of these water bodies are included in the venue descriptions. Excursions to these locations are not considered a water-based excursion (Refer to Section 19: Water-based Activities of the Department of Education's [Outdoor Education and Recreation Activities](#) policy). If you wish to discuss this further, please contact the Kings Park Education and Learning Office on (08) 9480 3638.

## Evacuation Plan

The BGPA has a comprehensive evacuation plan to manage and respond appropriately in an emergency response situation, such as fire and other major incidents.

In case of an emergency, Kings Park and Botanic Garden's, Park Management Officers will coordinate operations. Education Officers are connected to the Park Management Officers via two-way radio communication and mobile phone.

During an emergency, all excursion participants are required to follow the directions of BGPA staff and volunteers.

For further information please see section 15, Emergency Response Planning.

## Play Spaces

All play spaces are regularly assessed for safety and equipment has been built in accordance with relevant Australian Standards and guidelines. Rio Tinto Naturescape Kings Park is a learning and discovery facility, not a designated playground.



### Appropriate Dress

Students and the school's supervisory team should be appropriately dressed for the weather conditions and the outdoor environment. It is recommended that students wear their sport uniform with closed-in shoes and sunhats. Please bring jackets or raincoats for cooler and inclement weather.

At all times of the year students should have access to sunscreen, insect repellent and water bottles.

## 5. Student Capacity and Health Care

Kings Park Education and Learning provides a range of educational opportunities to suit all learning abilities.

Kings Park Education and Learning will support teachers to manage student's health care needs while on excursion. Details of any health care, physical and/or learning needs or cultural requirements should be provided when making your booking. This will enable the Bookings Officer to advise on suitability of programs and venues, and the Education Officer to tailor the education program to best meet the needs of your students where possible.

## 6. Supervisory Team

The school, based on the age and capacities of students and the activities to be undertaken, is required to determine the school supervisory team prior to the excursion. The school supervisory team is responsible for monitoring the physical wellbeing and behavior of students at all times. Supervisors nominated by the school should remain with the students in their care at all times during the excursion.

Kings Park Education and Learning Officers have the experience, knowledge and skills to assist the school supervisor team, where required and /or requested, to:

- identify and establish a safe environment for the activity.
- monitor and respond to weather and environmental conditions before and during excursion activities.
- monitor and assess the physical wellbeing of the students; and
- effect a rescue and render emergency care.

Duty of care and first aid is the responsibility of the school supervisory team. However, in cases of emergency, or where assistance is required, Kings Park Education & Learning Officers have current first aid qualifications and access to first aid equipment.



The Park Management Officers (PMOs) are nominated by St John Ambulance as the First Responders to any incident in Kings Park. The PMOs can be reached directly on 0418 923 973 or alternatively they will be contacted to attend via the '000' operator.

In cases of serious medical emergency, calling '000' should always be the school supervisory team's first response.

An excursion to Kings Park and Botanic and Rio Tinto Naturescape Kings Park is not considered a water-based excursion (Refer to Section 19: Water-based Activities of the Department of Education's Outdoor Education and Recreation Activities policy (2019)).

It is the school's responsibility to ensure teaching staff and parent/carers/guardian acting as supervisors are compliant with the WA Education Department's *Working with Children Checks in Public Schools Policy* have appropriate clearances for working with children.

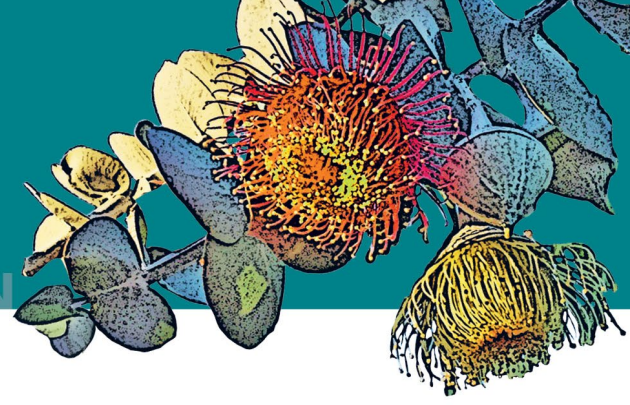
## 7. Supervision Strategies

Student supervision, conduct and belongings remain the responsibility of the school supervisory team. Misconduct by students and/or the school supervisory team may result in the BGPA asking the school group to leave Kings Park and a restriction on future bookings.

In all areas of the Park there are naturally occurring hazards, therefore effective supervision of students is recommended at all times. This includes directing parents/carers/guardians who are acting as supervisors to stay with their allocated student group at all times and prohibiting the attendance of siblings who are not part of the excursion. The use of mobile devices should be limited to break times.

The BGPA strongly recommends that the following minimum adult to child supervision ratios be applied for excursions to Kings Park and Botanic Garden:

Kindergarten:	1 adult to 4 students
PP to Year 2:	1 adult to 5 students
Years 3 to 6:	1 adult to 6 students
Years 7 and 8:	1 adult to 10 students
Years 9 and 10:	1 adult to 15 students
Years 11 and 12:	1 adult to 30 students



## 8. Identification of Excursion Participants

Students from different schools may be present at the same venue during the excursion. To assist the school supervisory teams and Kings Park and Education Learning Officers in identification of students, it is recommended that students wear school uniform (sports) with the school logo. For schools without uniform, some other form of easily identifiable item.

The school supervisory team is responsible for ensuring excursion documentation, including emergency contact information is correct and readily accessible for the duration of the excursion.

## 9. Communication Strategies

The Botanic Gardens and Parks Authority (BGPA) regulations do not permit the use of megaphones, air horns, school two-way radios or whistles. We advise the school supervisory team to use mobile phones as part of their communication plan and to have entered all the relevant excursion and school-based contact numbers into the phone.

The mobile phone contact for the teacher-in-charge of the excursion should be provided to the Education Bookings and Support Officer on booking.

All BGPA staff on duty carry two-way radio's for communication purposes. BGPA staff and volunteers wear BGPA badged uniform and can be approached to for assistance.

If you require assistance on the day of your excursion, please contact:

Venue	Contact	Number
Rio Tinto Naturescape Kings Park	Education Bookings and Support Officer	0467 809 836
Kings Park and Botanic Garden	Park Management Officer	0418 923 973

## 10. Briefing Students and Supervisors

Students and the School Supervisory team should be briefed by the teacher-in-charge prior to an excursion to Kings Park and Botanic Garden regarding rules and safety protocols concerning visitor conduct.

It is the responsibility of the School Supervisory team to ensure their students good behaviour.



Students should be reminded that they are sharing Kings Park and Botanic Garden with other school groups and members of the general public, appropriate behaviour is expected to ensure an enjoyable and safe experience for all visitors.

Misconduct may result in the school group being asked to leave the Park and a restriction on future bookings.

Volunteers/parent help should be discouraged from bringing other children or siblings.

There are plenty of grassed areas for picnic lunches, and free electric barbecues are available in Parkland areas and the Pines Picnic Area near the Education Centre.

It is advisable that lunches are protected from scavenging birds and weather. Please use individual student backpacks, esky's with lids or covered baskets.

As part of the BGPA's commitment to conserving the environment, only limited rubbish bins are provided. There are no rubbish bins in Rio Tinto Naturescape Kings Park, the Western Australian Botanic Garden or at the Education Centre. Schools are responsible for removing all their rubbish from the site.

In the event of inclement weather there are shelters in Rio Tinto Naturescape Kings Park and the Western Australian Botanic Garden available for use as part of your excursion.

It is recommended that you minimise the amount of belongings that you bring as we are unable to secure any valuables.

As a State Government authority, the BGPA is subject to the *Botanic Gardens and Parks Authority Act 1998* and *Botanic Gardens and Parks Regulations 1999*. These are in place to protect Kings Park and Botanic Garden's natural environment, cultural heritage and all visitors. There are penalties for any offences that are listed in the Regulations.

Please ensure that your students comply with the BGPA Regulations at all times and excursion participants should be reminded of the following:

- picking flowers and other plant material is not permitted.
- climbing trees is not permitted anywhere in Kings Park except Rio Tinto Naturescape Kings Park.
- participants are to keep to paths and not walk through the garden beds or off tracks in the bushland.
- feeding any birds or other animals is not permitted and will also make the animals ill.
- litter must be deposited in rubbish bins or taken back to school to be disposed of.



## 11. Transport Arrangements

Arranging transport to Kings Park and Botanic Garden is the responsibility of the school.

Buses can enter Kings Park via Fraser Avenue, Saw Avenue or Poole Avenue and there are bus drop-off points at all Education Program venues. Buses are to be moved from the drop-off areas and parked in the Wardong Buspark or where verge parking is permitted along May Drive. More information is included in the venue descriptions provided in section 9 of this Management Plan. It will state on your confirmation letter which bus drop-off point to use.

The [Kings Park Education School Excursion Map](#), which includes drop-off points and bus parking, can be found in the maps and transport section of the [BGPA website](http://www.bgpa.wa.gov.au) (www.bgpa.wa.gov.au).

Volunteers/parent helpers travelling separately can park in designate car parking areas near to the program venue.

## 12. Location and Venues

This section describes each of the areas of Kings Park available for school excursions:

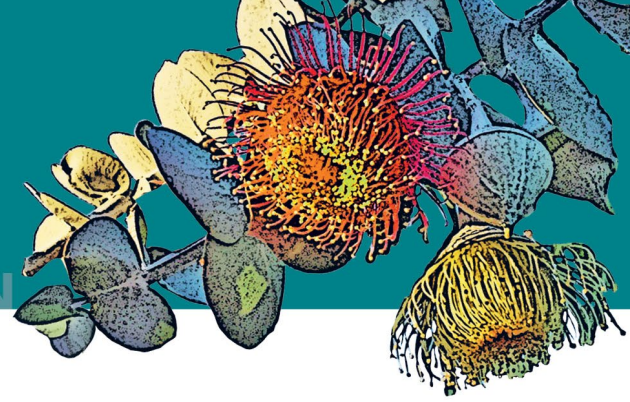
1. Rio Tinto Naturescape Kings Park
2. Western Australian Botanic Garden
3. Kings Park Education Centre
4. Saw Avenue Picnic Area
5. Lotterywest Family Area
6. May Drive Parkland
7. Biodiversity Conservation Centre
8. State War Memorial Precinct

Visitor maps for each of the precincts can be downloaded from the [Maps and Transport](#) section of the [BGPA website](http://www.bgpa.wa.gov.au) (www.bgpa.wa.gov.au).

### 1. Rio Tinto Naturescape Kings Park

Rio Tinto Naturescape Kings Park (RTNKP) is a unique outdoor learning and discovery facility affording an immersion experience that connects children to nature. RTNKP is open Tuesday to Sunday, excluding all February, Public Holidays and days of; Extreme Fire Ratings, Total Fire Bans and Severe Weather Warning.





Kings Park Education and Learning Officers engage students in formal hands-on and inquiry-based learning opportunities linked to the Western Australian Curriculum. In addition, the six-hectare bushland environment provides unique opportunities for exploration, self-guided learning and resilience building experiences.

### Location

RTNKP is located between Fraser Avenue, May Drive and the Lotterywest Family Area. The main entry is on May Drive. School groups should enter via the designate School Group Entrance adjacent to the Warrdong Bus Park. Guided entry to RTNKP for school groups is also available from the Kings Park Education Centre.

### Environment Description

The key design features of the RTNKP site are described below;

- A distinctive entry precinct, from May Drive provides an exciting sense of arrival for visitors and orientation to the site. Visitors enter through a large steel and timber sculpture created by Western Australian artist Jon Tarry. A chrysalis has inspired the artwork: a protective covering that certain insects use, such as butterflies, when undergoing transformation in a pupa state. This reflects the protected stage of development and growth of children and their relationship with the environment. From the sculpture, visitors will follow a single entry path that provides a sense of immersion in nature, with key site features deliberately obscured from view.
- Bushbase including **Paperbark Creek** and **Paperbark Waterhole** is the first destination for visitors and is situated at the heart of the site. It is a focal point for school and community gatherings with several sheltered seating pods. Throughout the site there are rocks and logs provided for informal seating. This area includes a granite-lined creek and 3 shallow pools surrounded by paperbark trees. It provides a base for visitors and a springboard to explore the rest of the site.
- **The Python** is an aerial walkway consisting of sloping walkways, ladders and semi-enclosed viewing platforms. The entry/exit points extend from Bushbase to Cubbies. Extra care should be taken when using this equipment due to low head clearance.
- At the end of The Python the secluded **Cubby Area**, completed with steel nest-like structures, provides students the opportunity to build cubbies and dens with natural materials.
- **The Spring** is the water source for all waterbodies in the site. It features large granite rocks with 'mixing bowls' honed into them for imaginative play. It is also the location of the five-metre high canopy tower which offers a bird's eye view of the site.



- The **Illyarrie Shelter** provides a covered 'stage' and seating area for groups of up to 120 students taking part in Kings Park Education and Learning programs. When not in use for education bookings, the area provides additional gathering space and shelter.
- **The Burrow** is a large mound, raising from the Paperbark Waterhole constructed of metal sheeting, rock and sand. Running through the Burrow is a tunnel that opens either into the Tangle or vertically through the mound via a ladder and metal nest-like structure.
- **The Bungarra** is an aerial walkway consisting of sloping walkways, ladders and semi-enclosed viewing platforms. The entry/exit points extend from The Burrow to The Tangle.
- The Tangle is a secluded area of the site featuring an extensive web of climbing ropes nestled between Rottnest Island Pines and a series of upside-down trees.
- Boomerang Bridge spans the **Billabong** in a high conservation zone of the site. The Billabong is a habitat zone for wildlife, and as such access to the water is not permitted. **Dragonfly Corner** is a small log-seating area adjacent to the Billabong for quiet observation.
- The **Kooyar Kep Wetland** is a habitat zone for the observation of flora and fauna associated with wetlands. This zone highlights the importance of biodiversity and ecological processes in wetlands. The Kooyar Kep Wetland is divided into two sections providing an outdoor classroom area and pond dipping platform for Kings Park Education and Learning programs and a separate area for community use. Two canopy towers overlook the wetland: a three-metre tower offers a less challenging experience and the tallest tower of seven metres provides a lookout amongst the tree canopy.
- **Kulunga Gully** is a walled gully that zigzags through part of the site below the natural ground level, providing an alternative view of the land. It is accessible by wheelchair.
- **Kulunga Katitjin** provides an outdoor learning area for Kings Park Education and Learning school and community programs. Featuring four shaded 'outdoor classrooms', it also includes Pobblebonk Jetty at the Kooyar Kep Wetland and a fire pit at Karla Yarning.



### **Facilities in Rio Tinto Naturescape Kings Park**

#### **Toilets with disability access**

The Jarrah Toilets are located in Lotterywest Bushbase.

#### **Drinking Water**

Four drinking fountains with water bottle filling points are located in the site, at the main entry, Paperbark Creek, the Jarrah toilets and Education Centre.

#### **Seating**

There are eight sealed seating pods of various size on site, six of which offer shade. Informal log and rock seating can be found throughout the site. Five 'base' pods have been identified for school groups, providing a gathering area, seating space and shade. Schools will be allocated a 'base' pod on arrival.

#### **Paths**

Hard surface paths provide wheelchair access through the site. There is also a raised walkway and two bridges with steel mesh surfaces. Please note that not all areas of the site are wheelchair accessible.

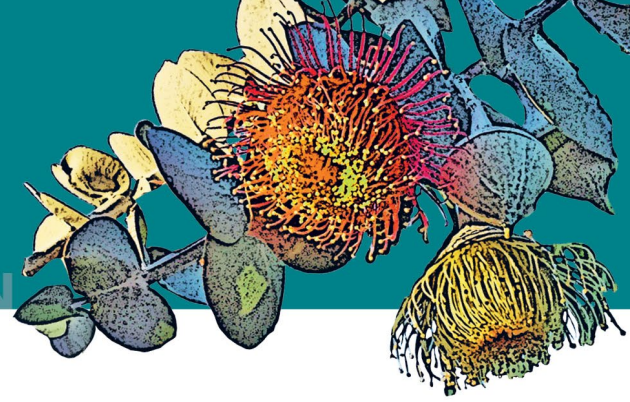
#### **Lunches/ Morning Tea**

As part of the BGPA's commitment to conservation of the environment, rubbish bins are not provided in RTNKP. All schools are encouraged to take their rubbish back to school to recycle. Please bring your own rubbish bags and remove them and all rubbish created from the site. As part of your commitment to the environment and in keeping with the environmental theme of the site please encourage your students to bring low waste lunches.

There are seating pods in RTNKP where lunch and morning tea can be eaten. An alternative lunch area is adjacent to the site at the Exhibition Ground (see site map). This area is a short walk from RTNKP and has a large, semi-shaded grassed area suitable for picnic lunches and games. Toilets are located nearby. The WA Botanic Garden, with its expansive lawns is also a 10-minute walk from RTNKP. It is advisable that you bring your students' lunches/morning tea in transportable eskies, individual bags which can be carried or covered baskets. All food should be covered and secured for protection against hungry birds.

#### **Bags, Belongings and Valuables**

It is recommended that you minimise the number of belongings that you bring as storage space is limited and we are unable to secure any valuables.



### **Water bodies in Rio Tinto Naturescape Kings Park**

An excursion to RTNKP is not considered a water-based excursion as per Section 19: Water-based Activities of the Department of Education's Outdoor Education and Recreation Activities policy.

The RTNKP site contains four distinct water bodies, the Kooyar Kep Wetland, Paperbark Creek, Paperbark Waterhole and the Billabong.

#### **Kooyar Kep Wetland**

This water body is a purpose-built outdoor learning environment that provides safe and well managed access to a wetland habitat.

A closed waterbody consisting of a small, shallow (maximum depth 0.5m), sand-lined, vegetation fringed pool, connected via a shallow stream to a larger pond with pond-dipping platform. The pond has rock, log and sedge vegetation surrounds. The rock formations have been carefully placed to allow access to the water for sampling purposes. The pond has shallow water at the edges sloping at a gentle 1:6 gradient from 250mm to a maximum depth of 1m in the centre of the pond. Undulating in shape, the pond is approximately 13m x 15m at its maximum width and length.

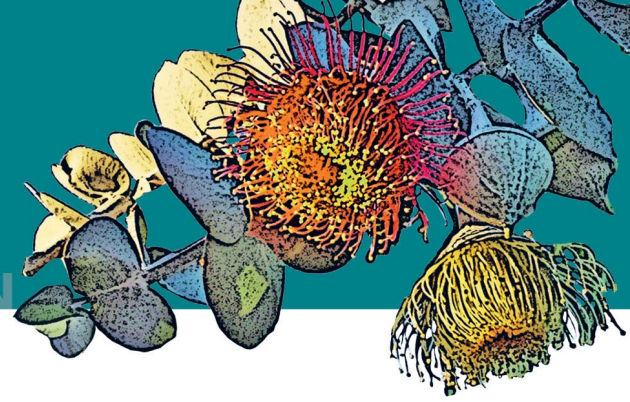
This pond is connected via a further shallow stream to a third pool approximately 17m x 15m. Similar in characteristics to the previous descriptions it has a maximum depth of 1m with gentle sloping edges. A final short stream runs from this pool to complete the waterbody.

Water levels are regulated, with a slow flow rate into and out of the Wetland. This assists to maintain water quality and water levels throughout the year, and prevent stagnation and algae build up.

#### **Paperbark Creek**

A closed waterbody with a creek-like design consisting of a series of three shallow pools linked by shallow, rocky streams. The largest pool is 8m x 5m with a maximum depth of 0.5m at its deepest point. The two smaller pools are approximately 4m x 5m with a maximum depth of 0.5m at the deepest point. The connecting stream has clear flowing water less than 0.2m deep. The waterbody is lined with sand, pebbles and rocks in varying locations and surrounded by fringing vegetation, rocks, logs and seating pods. One bridge spans a narrow section of Paperbark Creek allowing access to the Jarrah Toilets and Illyarrie Shelter. Balancing logs, rock formations and in ground-hides are a feature of this waterbody. The water is recycled through the wetland system, passing through sand filtration and ultraviolet sterilisation to remove harmful bacteria before re-entering the system at spring\*.

\*Please note that while every effort is made to maintain water quality, the stream is not chemically treated and therefore harmful bacteria may be present, and water should not be ingested.



Students may wade up to knee height in the shallow water at Paperbark Creek and Paperbark Waterhole at the discretion of the school supervisory team.

### **Paperbark Waterhole**

An extension of the Paperbark Creek system. It consists of a short, shallow rocky stream with running water less than 0.2m deep feeding an approximately 18m x 8m pool with a maximum depth of 0.5m.

### **The Billabong**

The Billabong is a habitat zone, located between Lotterywest Bushbase and the Kooya Kep Wetland. The path linking the two areas crosses the Billabong via Boomerang Bridge. It is a closed water body 26m x 11m at its maximum length and width. The pond has rock, log and dense vegetation surrounds with shallow water at the edges sloping at a gentle gradient from 0.25m to 1m at its deepest point. Access to the water is not permitted in this area.

---

### **Drop-Off Locations and Parking**

**Wardong Bus Park** – Drop off Zone B. Entry to the drop off zone in Wardong Bus Park is from May Drive. School groups should enter via the designate School Group Entrance. Guided entry to RTNKP for school groups is also available from the Kings Park Education Centre.

Buses are to be parked in the Wardong Buspark situated off May Drive. Car parking is available along the May Drive verge, in the Botanic Garden Carpark or the Wadjuk Carpark.

---

## **2 Western Australian Botanic Garden**

The Western Australian Botanic Garden celebrates the unique and diverse plant life of Western Australia and is part of the worldwide network of Botanic Gardens committed to plant conservation and education.

### **Location**

The Western Australian Botanic Garden is located between the State War Memorial, Forrest/Lovekin Drive and the Mount Eliza Scarp. There are multiple public entry points. Education programs are located in the Women's Pioneer Memorial Area (drop-off location C). The Kings Park Education Map is available to download from the [BGPA website map section](#).



### Environment Description

The Botanic Garden is 17 hectares of landscaped lawns, garden beds and water features that showcase endemic plant species from predominantly Western Australia.

The key elements of this area include:

- **Botanic Garden Entry** – consists of the sculpture “Symbiotica” with eight meters high arching panels featuring copper and dichroic glass highlights and diverse garden beds featuring an array of Western Australia plants.
- **Pioneer Women’s Memorial Area** -a landscaped lawn area stretching from Forrest Drive to the Mount Eliza Escarpment. It includes garden beds, such as the Wax Garden and Banksia Garden open stands of large trees (Peppermint Lawn and Tuart Lawn) and the Water Garden.
- **The Water Garden** - a waterbody featuring the Pioneer Women’s Memorial Fountain in an ornamental lake approximately 40m x15m with a depth of 0.4m, which flows into two ponds in the Darling Scarp replica stream system. The ponds are approximately 25m x 15m with a depth of 1.5m and are surrounded by sedges and rocks. The lake and ponds are unfenced and include crossover bridges with handrails. The stream and pond areas have thick vegetative borders that provide a natural barrier. **Wildflower Pavilion** - adjacent to the Conservation Garden and providing shelter in the event of bad weather. It can be booked for use by community and school groups (fees may apply). You will be notified in your confirmation letter if your program will be based in the pavilion.
- **Lotterywest Federation Walkway** - located along the Mount Eliza Escarpment, the walk over the elevated glass bridge offers spectacular views of Perth City and Swan River.
- **Roe Gardens** - a shady area of lawn and garden beds overlooking the Swan River and is located at the southern end of the Botanic Garden. It features the Roe Memorial which bears a bronze plate depicting one of the earliest maps of Perth, the Aboriginal War Memorial, Northern Sandplains Flora garden beds, the Grevillea and Hakea garden beds and the Place of Reflection.

### Facilities

- Toilets with universal access:
  - Tuart Toilets are located at the eastern side of the Botanic Garden near the Wildflower Pavilion.
  - Botanic Garden Toilets are located in the Botanic Garden Carpark.
  - Roe Gardens Toilets are located on Forrest Drive opposite the Roe Memorial.
- Drinking fountains are distributed throughout the Botanic Garden.



- Large lawn areas with large tree canopies provide shade throughout
- Hard pathways
- School bus drop-off point C
- Car parking.

### Drop-Off Locations and Parking

**Pioneer Women's Memorial Area** – Drop-off Zone C - The bus drop-off zone is on the slip road at intersection of Lovekin and Forrest Drives adjacent to the Botanic Garden.

Buses are to be parked in the Wardong Buspark situated off May Drive. Car parking is available in the Botanic Garden Carpark or the Wadjuk Carpark.

**Botanic Garden Entry** - Buses can use the designated drop-off point (clearly signposted) in Wadjuk Carpark. Assembly is on the forecourt adjacent to Aspects of Kings Park (gallery shop).

Bus parking is available in the Wardong Buspark situated off May Drive. Car parking is available in the Wadjuk Carpark.

### 3 Kings Park Education Centre

The Kings Park Education Centre is an environmentally friendly building designed with several sustainability features. It is embedded into the ground and has an earth covered roof which acts as a thermal insulator to keep the interior cool during the summer and warm in winter. The building is solar powered and is surrounded by native gardens.

#### Location

The Kings Park Education Centre is located between Fraser Avenue, the Mt Eliza Reservoir and Rio Tinto Naturescape Kings Park. There is a dedicated drop-off point A on Kattidj Close, accessible from Fraser Avenue. Entry is for booked groups only.



### Environment Description

The Kings Park Education Centre consists of an office building, indoor classroom, education garden and outdoor learning areas. The centre is adjacent to an open lawn area (Exhibition Ground), bushland and Rio Tinto Naturescape Kings Park.

### Facilities

- Toilets with universal access adjacent to the Exhibition Ground
- Drinking fountain
- Indoor teaching space with 70 person capacity
- Outdoor sheltered teaching space
- Audio visual systems for presentations and learning
- Lawn areas for morning tea and lunch
- School bus drop-off bay
- Car parking.

### Drop-Off Locations and Parking

Kings Park Education Centre – Drop-off Zones A and B. Drop-off zone A is adjacent to the Kings Park Education Building on Kattidj Close. Please do not park in this area. You may also be directed to use drop-off zone B in the Wardong Buspark.

Buses are to be parked in the Wardong Buspark situated off May Drive. Car parking is available in designated bays on Kattidj Close or in the Wadjuk Carpark.

## 4 Saw Avenue Picnic Area

The Saw Avenue Picnic Area was upgraded in 2014 to provide a modern, family friendly recreation area in a tranquil bushland setting.

### Location

Saw Avenue Picnic Area is located on the Subiaco side of Kings Park and Botanic Garden and is accessible via Saw Avenue and May Drive.

### Environment Description

Saw Avenue Picnic Area has a parkland setting with open grassed areas and large trees, perfect for large groups and picnics.





The key elements of this area include:

- **Variety Place** - a modern nature-based adventure play area suitable for children of all ages and abilities. The play area includes a fort, climbing nets, bridges, tunnels and balancing logs, as well as woodcarvings by local artist Nic Compton.
- **Variety Pavilion** - provides shelter in the event of bad weather. It can be booked for use by community and school groups (fees may apply). You will be notified in your confirmation letter if your program will be based in the pavilion.
- **Saw Avenue Amphitheatre** - provides a natural stage and seating area with power.

### Facilities

- Toilets with universal access
- Drinking fountains
- Shaded grassed areas
- Eight free electric barbecues
- Lawn areas for ball games
- Picnic tables and benches
- Parking for cars and buses
- School bus drop-off bay
- Hard pathways
- Children's play area.

### Drop-Off Locations and Parking

The designated drop-off point is on the north-bound side of May Drive before Saw Avenue.

Buses are to be parked along the verge of May Drive or in the Wardong Buspark situated off May Drive. Car parking is available in the Kulbardi Carpark and on May Drive.

## 5 Poolgarla Family Area

The Poolgarla Family Area is a parkland area most used as a family and recreation space.

### Location

The Poolgarla Family Area is accessible via Kings Park Road on the Park's northern boundary.

### Environment Description

The Poolgarla Family Area consists of the Ivey Watson Playground, picnic and BBQ areas and Hale Oval, bordered by bushland to the west and the Royal Kings Park Tennis Club and Next Generation Clubs fitness facility to the east.



The key elements of this area include:

- **Hale Oval** - an open grassed area suitable for all school groups. Facilities include barbecues, shelters, toilets and space net.
- **Ivey Watson Playground** - designed for families with children under five years old, the area is not suitable for use by school groups. Schools are not permitted to use this playground for excursions.
- **Koorak Cafe** – open daily to provide drinks, snacks and meals.

### Facilities

- Toilets with universal access located at Koorak Café
- Drinking fountains
- Shaded areas
- Eight free electric barbecues
- Lawn areas for ball games
- Hard pathways
- Space net
- 4 x Pavilions - Cork Oak, Marri, River Gum and Willong Pavilions are available for hire. Advance bookings are required and fees apply. Contact the Educations Bookings and Support Officer on (08) 9480 3638.
- Koorak Café – Ice-cream orders can be made in advance by phoning (08) 9481 4990.

### Drop-Off Locations and Parking

Poolgarla Family Area Drop-off Zone – There is a clearly signed designated drop-off bay in the car park near Koorak Café.

Buses are to be parked in the Wardong Buspark situated off May Drive. Car parking is available in the car park adjacent to Hale Oval.

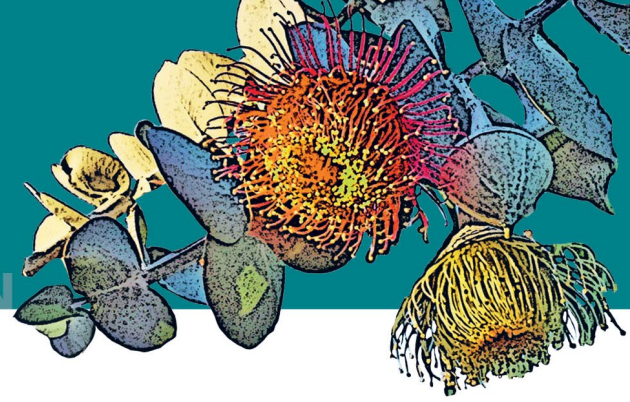
## 6 May Drive Parkland

May Drive Parkland is a family recreation area, with café facilities suitable for large groups.

### Location

The May Drive Parkland is suited off May Drive, located on the western side of Kings Park and easily accessed via Saw Avenue or Poole Avenue

### Environment Description



May Drive Parkland consists of manicured lawns, picnic areas, garden beds and the Arthur Fairall Playground. It is surrounded by bushland and has a water body at the centre.

The key elements of this area include:

- **Vietnam Memorial Pavilion** - Advance bookings are required and fees apply. Contact the Bookings Officer.
- **Megafauna sculptures** - large scale replicas of extinct Australian Mega Fauna.
- **Backyard Botanicals Garden** – a demonstrative ‘grow-me-at-home’ garden featuring native plants.
- **Lycopod Island** - contains a raised fort and slides, monkey bars and a fire pole with soft fall ground cover. Two boardwalks, with handrails and wheelchair access, allow students to safely access the island.
- **Arthur Fairall Playground** - includes climbing frames, swings and the raised ‘Windy Walk’. There are several dinosaur public artworks installed in the area. The playground is suitable for primary school age students and available for use by school groups.
- **The lake** - a shallow, closed water body within May Drive Parkland. This water body surrounds Lycopod Island and is approximately 0.4m deep, 51m wide and 85m long. It is unfenced. A bridge with firm handrails provides access to the island. This ornamental pond has been in this location for 50 years with no incidences of note.

### Facilities

- Toilets with universal access located at Bovell Kiosk and Zamia Cafe
- Drinking fountains
- Shaded areas
- Ten free electric barbecues
- Grassed area for ball games
- Picnic benches
- Adventure playground
- Zamia Café - Ice-cream orders can be made in advance by phoning (08) 9388 6700.

### Drop-Off Locations and Parking

Designated drop-off point are signed along May Drive at the north-western end of May Drive Parkland, near the Bovell toilets.

Buses are to be parked on the verge along May Drive where space is available or in the Wardong Buspark. Car parking is available on the verge along May Drive.



## 7 Biodiversity Conservation Centre

The Biodiversity Conservation Centre (BCC) was built in 2005 to provide energy efficient office and laboratory facilities for BGPA's staff and volunteers.

### Location

The BCC is located off Kattidj Close which is accessed from Fraser Ave. Visitor access is through a gate located adjacent Fraser Lawn.

### Environment description

The Biodiversity Conservation Centre (BCC) is a working building, consisting of BGPA staff offices, science research laboratories, WA Seed Technology Centre, Nursery and other associated buildings. Access to the facility is strictly limited and by prior appointment.

### Facilities

- Meeting rooms
- Toilets with universal access.

### Drop-Off Locations and Parking

Kings Park Education Centre – Drop-off Zones A and B. Drop-off zone A is adjacent to the Kings Park Education Building on Kattidj Close. Please do not park in this area. You may also be instructed to use drop-off zone B in the Wardong Buspark.

Please note that buses and coaches are not permitted on the BCC slip road.

Buses are to be parked in the Wardong Buspark situated off May Drive. Car parking is available in designated bays on Kattidj Close or in the Wadjuk Carpark.

## 8 State War Memorial Precinct

The State War Memorial Precinct comprises of the Cenotaph, Court of Contemplation, Flame of Remembrance and Pool of Reflection; with memorials to various battles, military units, prisoners of war and other groups found throughout the parkland.

### Location

The State War Memorial precinct is located at the end of Fraser Avenue with access, drop-off and parking via Wadjuk Way.



### Environment description

The State War Memorial Precinct is situated on the Mount Eliza Escarpment overlooking the Swan River and City of Perth. It has a parkland setting with open lawns, large trees and War Memorials. The State War Memorial Precinct is situated between Fraser Avenue to the West and the Western Australian Botanic Garden to the East. Please be respectful in this area and note that ball games are not permitted.

### Facilities

- Toilets with universal access, located behind the Visitor Information Centre
- Drinking fountains
- Grassed areas
- Shaded areas
- Rubbish bins in the café area
- Visitor Information Centre
- Kings Park Kiosk

### Drop-Off Locations and Parking

Buses can use the designated drop-off point (clearly signposted) in Wadjuk Carpark. Assembly is on the forecourt adjacent to Aspects of Kings Park (gallery shop).

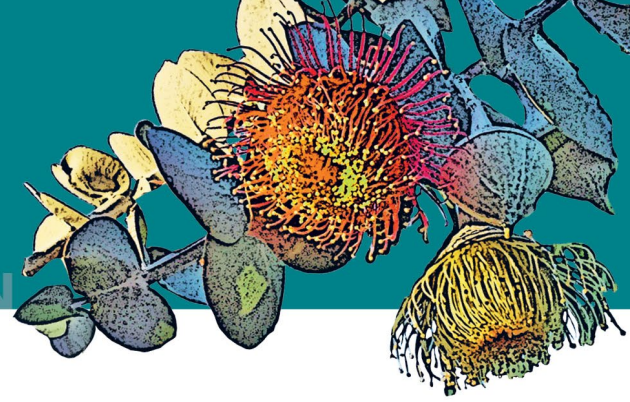
Bus parking is available in the Wardong Buspark situated off May Drive. Car parking is available in the Wadjuk Carpark.

## 13. External Providers

Kings Park and Botanic Garden is managed by the Botanic Gardens and Parks Authority, part of the Western Australian State Government, Department of Biodiversity, Conservation and Attractions.

The Kings Park Education and Learning Team are responsible for developing and presenting a range of WA curriculum linked education programs in Kings Park. Teaching staff are qualified, experienced and hold current Working with Children Checks and First Aid. A signed WWC declaration letter is available on request to the Education Bookings and Support Officer. The Kings Park Education & Learning Manager is Charlotte Vaughan, [Charlotte.Vaughan@dbca.wa.gov.au](mailto:Charlotte.Vaughan@dbca.wa.gov.au) however the daily duty officer-in-charge may differ depending on rosters.

External providers and BGPA specialists are engaged to deliver some programs requiring specialist scientific knowledge and Aboriginal cultural heritage content.



All Kings Park Education and Learning Volunteers are required to have Working with Children Checks. They are screened for suitability during the selection process and trained in the BPGA's working with children guidelines and emergency procedures.

Full organisation details and contact information is provided on Page 1.

Kings Park and Botanic Garden is a public venue. Other bookings for schools, community groups and private occasions may be taken during the time of your excursion.

## 14. Insurance Cover for Excursions

The Botanic Garden and Parks Authority has General Liability Insurance with Riskcover. The BGPA's limit of liability is up to \$600 million for any one occurrence. A copy of the BGPA's Certificate of Currency is available on the [Kings Park Education - Plan your Visit](#) section of the BGPA website.

This insurance policy does not cover loss or damage of personal belongings. Please remind students, staff and volunteers that they are responsible for their own belongings at all times.

## 15. Emergency Response Planning

The BGPA has a comprehensive Crisis Management and Communication Plan for all areas of Kings Park. We are confident of our ability to manage and respond appropriately in an emergency response situation, such as fire and other major incidents.

The BGPA has conducted thorough and extensive analyses of Kings Park and Botanic Garden, including Rio Tinto Naturescape Kings Park, for potential risks.

In case of an emergency in Kings Park and Botanic Garden, the Park Management Officers will coordinate operations. Park Management Officers have direct contact with DFES control centre in Perth and are first responders in case of a medical emergency.

The Park Management Officers' mobile telephone number is 0418 923 973.

Education and Learning Officers are connected to the Park Management Officers via two-way radio communication and mobile phone. Park Management Officers have access to First aid equipment including oxygen and defibrillator, and direct contact to Fire and Emergency Services outside Kings Park.

If the site is to be evacuated, excursion participants are to follow the instructions issued by the BGPA's Officer-in-Charge. Teachers, school-supervisor teams and students should listen carefully to directions and move in an orderly fashion as directed. Teachers are requested to maintain an accurate count of the members of their group.



To ensure visitor safety, Rio Tinto Naturescape Kings Park and areas of bushland are closed on days of; Extreme Fire Danger, Total Fire Ban and Severe Weather Warning. In these cases, the BGPA will contact schools as soon as possible to cancel and/or reschedule bookings (no additional fees will apply).

Local Emergency Services:

- Subiaco Police Station, Bagot Road, Subiaco.
- Sir Charles Gardner Hospital, Hospital Avenue, Nedlands.
- Perth Children's Hospital is closely located on the corner of Winthrop Avenue and Monash Avenue, Nedlands

## 16. Detailed Cost of Excursion

Fees apply to Kings Park Education and Learning programs, self-guided programs and special events. Refer to the [Make a School Booking](#) section of the BGPA website for up-to-date fees or contact the Education Bookings and Support Officer.

## 17. Information to Parents for their Consent

It is the responsibility of the school to provide full details of the excursion to parents and gain written parental consent for an excursion to Kings Park and Botanic Garden.

All information relevant to an excursion to Kings Park has been provided in this Excursion Management Plan, or is available on the [Kings Park Education](#) section of the BGPA website

## 18. Record Keeping

It is the responsibility of the school to retain records pertaining to an excursion to Kings Park and Botanic Garden as required.

For any other enquiries relating to a school excursion, please contact the Education Bookings and Support Officer on (08) 9480 3638